



Represented in the U.S.A. by Cantek America Inc.

PMB# 104, 1124 Fir Avenue
 Blaine, WA 98230
 Toll Free: 866-522-6835
 Fax: 604-540-1780
 E-mail: sales@leadermacusa.com
 www.leadermacusa.com

Call Toll Free - 1-888-265-4826

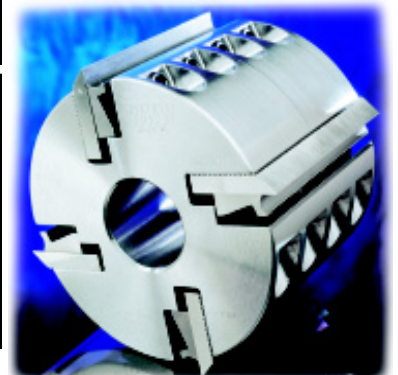
SPECIAL MOULDER CUTTERHEAD **CLEARANCE**

NOTE: We also have *On Special Non-Stock Quick Delivery Heads*

Sales Tax: Extra if Applicable

FOB: Delta Warehouse

Qty	Bore	Head Length	Head Dia.	# Knives	Cut Angle	Part Number	Regular Price	Special Price	
Plain Bore Heads						D = Dual Angle			
1	1 1/4	100	100	4	12	WIS CP1.25.4.4.412	\$ 265	\$ 220	
2	1 1/2	150	122	4	D	LMC CP1.5.6.122.4D	\$ 365	\$ 295	
1	1 1/2	230	122	4	D	LMC CP1.5.9.122.4D	\$ 507	\$ 419	
1	1 1/2	230	122	4	D	WIS CP1.5.9.122.4D	\$ 507	\$ 419	
4	1-13/16	150	122	4	12	WIS CP1.8.150.122.412	\$ 389	\$ 323	
2	1-13/16	230	122	4	12	WIS CP1.8.230.122.412	\$ 542	\$ 450	
5	1-13/16	300	122	4	D	LMC CP1.8.300.127.4D	\$ 570	\$ 473	
2	1-13/16	50	137	4	D	LMC CP1.8.50.137.4D	\$ 192	\$ 159	
5	1-13/16	155	127	4	D	LMC CP1.8.155.127.4D	\$ 273	\$ 227	
1	1-13/16	100	137	4	D	WIS CP1.8.100.137.4D	\$ 296	\$ 246	
3	1-13/16	150	137	4	20	FST CP1.8X150X137.420	\$ 389	\$ 292	
1	2 1/8	150	127	4	D	LMC CP2.12.150.127.4D	\$ 389	\$ 323	
4	2 1/8	300	127	4	D	LMC CP2.12.300.127.4D	\$ 645	\$ 495	
3	2 1/8	155	137	4	20	LMC CP2.12.155.137.420	\$ 389	\$ 298	
3	2 1/8	230	137	4	20	LMC CP2.12.230.137.420	\$ 542	\$ 434	
1	2 1/8	230	137	4	20	LMC CP2.12.230.132.420	\$ 542	\$ 434	
2	40	50	122	4	10	LMC CP40.50.122.410	\$ 191	\$ 159	
3	40	100	122	4	12	LMC CP40.100.122.412	\$ 278	\$ 229	
2	40	130	122	4	12	WIS CP40.130.122.412	\$ 315	\$ 261	
1	40	130	122	4	20	WAD CP40.130.122.420	\$ 334	\$ 234	
2	40	150	122	4	20	WIS CP40.150.122.420	\$ 365	\$ 295	
1	40	155	122	4	10	LMC CP40.155.122.410	\$ 365	\$ 295	
1	40	155	122	4	0	LMC CP40.155.122.4D (U)	\$ 365	\$ 295	
2	40	180	122	4	10	LMC CP40.50.122.410	\$ 418	\$ 347	
2	40	230	122	4	D	LMC CP40.230.122.4D (Used)	\$ 507	\$ 419	



To find out more about the products and services we offer be sure to visit our website:

www.leadermacusa.com

Qty	Bore	Head Length	Head Dia.	# Knives	Cut Angle	Part Number	Regular Price	Special Price
-----	------	-------------	-----------	----------	-----------	-------------	---------------	---------------

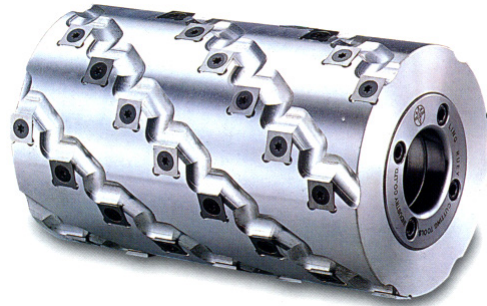
Plain Bore Heads D = Dual Angle

1	40	180	122	4	0	LMC CP40.180.122.4D	\$ 390	\$ 324
1	40	230	122	4	10	LMC CP40.9.122.410	\$ 507	\$ 375
199	40	230	122	4	D	LMC CP40.9.122.4D	\$ 507	\$ 375
1	40	230	122	2	20	WAD CP40.9.122.420	\$ 507	\$ 355
2	40	230	122	4	20	WIS CP40.230.122.420	\$ 507	\$ 421
1	40	230	122	4	20	WAD CP40.230.122.420	\$ 507	\$ 355
1	40	230	122	2	20	WAD CP40.9.122.420	\$ 507	\$ 355

4	50	150	127	4	D	LMC CP50.150.127.4D	\$ 365	\$ 295
10	50	230	127	4	D	LMC CP50.230.127.4D	\$ 507	\$ 421

Straight Flat Knife Heads

2	40	125	127	2	20	WAD CP40.5.127.220S	\$ 320	\$ 224
3	40	150	127	4	D	LMC CP40.150.127.4DS	\$ 362	\$ 253
5	40	230	127	4	D	LMC CP40.230.127.4DS	\$ 490	\$ 343



Qty	Bore	Head Length	Head Dia.	# Knives	Cut Angle	Part Number	Regular Price	Special Price
-----	------	-------------	-----------	----------	-----------	-------------	---------------	---------------

Spiral Carbide

2	1 1/2	14"	125	6S		LMC CS1.5.14.125.6S	\$ 1,290	\$ 950
1	1 1/2	180	125	6S		LMC CS1.5.180.125.6S	\$ 681	\$ 545
1	1-13/16	150	125	6S		LMC CS1.81.150.125.6S	\$ 586	\$ 469
1	1-13/16	230	122	6S		LMC CS1.81.230.122.6S	\$ 872	\$ 698
1	1-13/16	200	122	6S		LMC CS1.81.200.122.6S	\$ 782	\$ 626
1	1-13/16	240	125	6S		LMC CS1.81.240.125.6S	\$ 890	\$ 695
2	40	180	122	6S		LMC CS40.7.122.6S	\$ 681	\$ 545
2	40	205	125	6S		LMC CS40.205.125.6S	\$ 782	\$ 626
1	40	240	122	6S		LMC CS40.9.122.6S	\$ 872	\$ 698
2	50	50	125	6S		LMC CS50.60.125.6S	\$ 235	\$ 188
1	50	240	125	6S		LMC CS50.240.125.6S	\$ 885	\$ 695

Reference Cutters

1	1-13/16					LMC - Insert Knife 1-13/16	\$ 155	\$ 140
1	40					LMC - Insert Knife 40	\$ 155	\$ 140

Plain Bore Torsa Heads

2	40	155	125	4	T	LMC CT.40.155.125.4T	\$ 585	\$ 486
1	40	230	125	4	T	LMC CT.40.230.125.4T	\$ 765	\$ 635